



Automated Task Management and Scheduling



PTC Scheduler is the culmination of 20 years customer focused development of task scheduling solutions from PTC Software. Without compromise, the single most functionally rich and technically advanced software product PTC has developed.

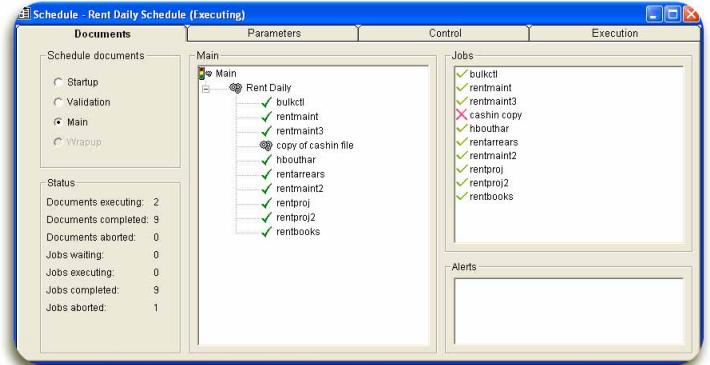
Today's Need - Easily Installed, Easily Managed Job or Task Scheduling across multiple platforms & applications

Job scheduling, or task management, provides automation of management and control systems for IT infrastructure enterprise production batch applications. **PTC Scheduler** manages the simultaneous parallel running

of multiple jobs on large multi-processor servers. It determines and controls the inter-system dependencies across locations, topologies, platforms, servers and operating systems.

Job Scheduling - Automated Management and Control of Enterprise Batch Applications

The Graphical User Interface is comprehensive, yet intuitive. Its simple layout needs little user training, reducing both installation costs and maximising ROI. It employs a "drag and drop" methodology to construct production flowcharts, while also making use of multi-layer architecture to define system schedules and task dependencies. The Management Information Centre includes both real time and historic data about the production environment with statistics and task details available both on-line and in management reports. Built in calendars and diaries make it easy to pre-schedule regular work to commence automatically.



Scheduler View

Reduce System Failures

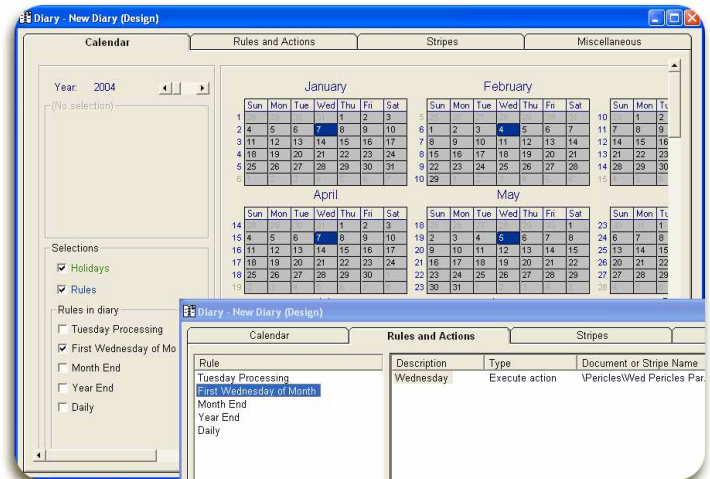
Automated calendars and parameter verification reduces error rates. When a failure occurs, **PTC Scheduler** automatically initiates pre-determined recovery procedures, whilst passing full error details via a notification to PTC Software's optional alert management solution, **PTC Alerts**.

Free Up Resources

Make more efficient use of system processor cycles and increase productivity across IT service and production teams, through automation of back office system processes.

Provide Unattended Operation

PTC Scheduler unattended operation features ensure all back office IT tasks are completed. Unfinished or failed tasks are reported automatically. **PTC Alerts**, a further component of **PTC Suite** can provide automated escalation of these issues.



PTC Scheduler Diary View

Increase Service Standards

PTC Scheduler improves service levels by reducing the risk of task failure. Every task is executed at the exact time, on the correct server, with the correct parameters. Because the process is automated, the opportunities for failure are minimised.

Comprehensive Management Console.

PTC Scheduler's "Single View" feature shows a snapshot overview of the entire production environment. At a glance, the status of every job is visible, with any problems or issues immediately highlighted in the "Aborted" column.

PTC Scheduler provides a number of management screens to show "at a glance" the current state of the production environment.

Intuitive Interface.

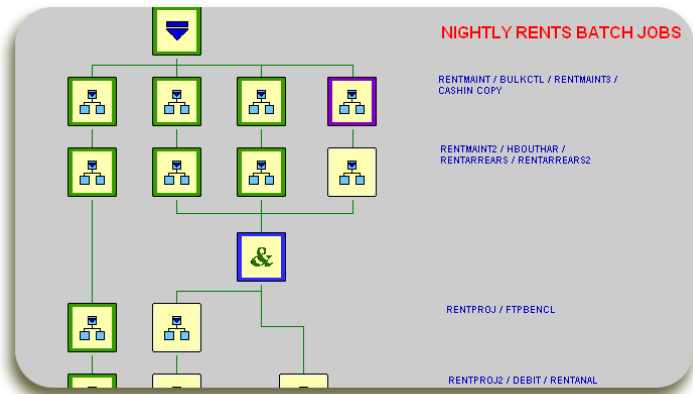
PTC Scheduler offers a simple, logical and intuitive Graphic User Interface (GUI) to develop and manage production schedules. The comprehensive tool-set makes it easy to build flowcharts using an intuitive "drag and drop" technique. For each step in the schedule,

PTC Scheduler provides the capability to define both "normal" and "error" termination paths. Use of real time colour coding allows the user to see instantly the progress of the chart as it flows.

Calendar Management.

PTC Scheduler's powerful calendar utility allows the user to set up schedules to run regularly, taking into consideration any periodic changes like year-end processing or bank holidays.

Schedules of jobs can be initiated automatically by the calendar. They can also be started manually or be triggered by a number of conditions (such as date/time; system/program message) or an event from a separate schedule (such as a completed file transfer) even if it is from a different server.



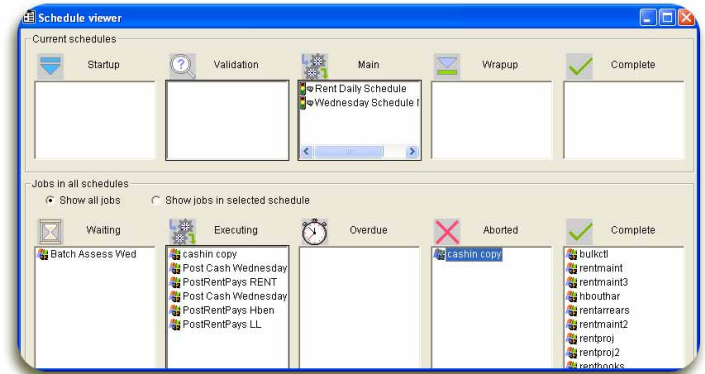
PTC Scheduler Flowchart

Analysis and Reporting.

PTC Scheduler maintains historical data about the production environment.

This information is available to provide statistical analysis at the site, server or even job level.

PTC Scheduler offers a comprehensive set of management reports and also includes a report generator, enabling standard reports to be customized and new reports to be generated.



Schedule with Abort

Failsafe Capability.

The "Keep Alive" option ensures that you know immediately if there is a problem with the PTC Server.

Additional peace of mind can be achieved via integration with PTC Suite.

Overview

PTC Scheduler has delivered over £20 million in savings to IT departments. As PTC Software continue to expand and refine its capabilities, so it continues to ensure enterprise infrastructure runs smoothly, efficiently and delivers on value.



MONITOR | MEASURE | MANAGE